

NEW

 **EQUITONE**  
Fibre cement facade materials

EQUITONE [materia]

[www.equitone.com](http://www.equitone.com)



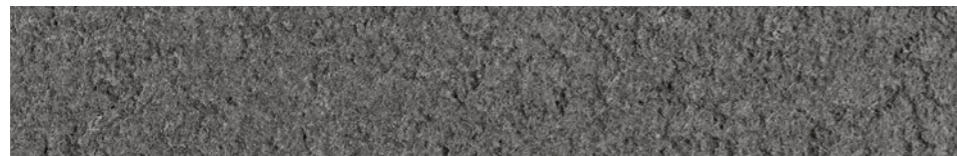
# EQUITONE [materia]

EQUITONE [materia] is a through coloured facade material that accentuates the beauty of fibre cement. The material encompasses the characteristics of cement, whereas the fibres render its surface textured yet velvety. The ever-changing atmosphere, gives the material natural subtle shade variations. The material comes in large panel size and can be transformed into any size or shape in the workshop or on site.

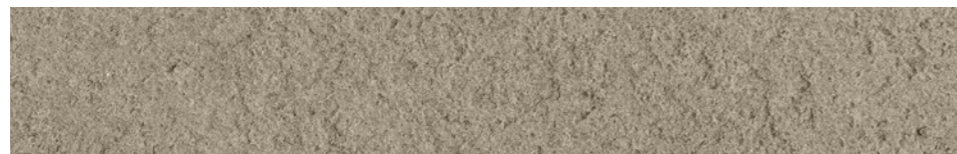
## DIMENSIONS

8 mm	1250 mm	2500 - 3100 mm
------	---------	----------------

Available in 2 colours:



MA400



MA200







 **EQUITONE**  
Fibre cement facade materials



[equitone.com](http://equitone.com)  
[pinterest.com/equitonefacade](https://pinterest.com/equitonefacade)